



# MUSIC TALK

"There is no end to education. It is not that you read a book, pass an examination, and finish with education. The whole of life, from the moment you are born to the moment you die, is a process of learning." - *Jiddu Krishnamurti*

## MEASURING MUSICAL PROGRESS

**JULY 09**

All students have different dreams and goals when it comes to learning music. Whether you are learning for fun, or with the intention to take your music very seriously, it is important that lessons are regular, and structured.

Goal-based learning is one of the most important ways to keep motivation and develop skills to a higher level. Effective goals can range from performance to band participation. One of the most effective goals for most students is based around formal examinations.

Examinations require a student to meet measurable criteria, across a range of musical skills, and are generally graded so that over time, the skills become progressively more advanced, but at the same time remain highly achievable. Formal examination syllabuses exist for all the instruments we teach, and additionally, there are different examination bodies and requirements that cover a wide range of music, from classical to jazz to rock. Your teacher can advise the best way for you to benefit from external examinations.

As students progress to higher levels, (or indeed higher grades) it is worthwhile considering the added benefits of having longer lessons. Extra time allows you to cover a wider range of material and spend more time on mastery each week. This can make a huge difference to your rate of progress. If you would like to take longer lessons to get the very best value from your musical education, please speak directly with your teacher.

## PERFORMANCE AFTERNOONS

Held on Sunday 28<sup>th</sup> June, our end of term Performance Afternoons were a great success. A small but supportive audience at Ponsonby Intermediate were presented with a real variety of instruments, ranging from trumpet to accordion, piano to flute. Both the North Shore and West Auckland performances were a great success with a large number of performers all having fun making music.

"Performer of the Day" Awards were presented to the following students: **Charles Law** (piano), **Leonie Douglas** (flute), **Stephanie Rooke** (accordion), **Natasha Welch** (guitar), **Brianne Harris** (piano) **Philip Fan** (guitar), **Zihang Wang** (Saxophone), **Robert Saunders** (piano) and **Erica Knights' Accordion Group**.

## LESSON FEES

At the Music Education Centre, one of our primary focuses is on providing long term value to students through music tuition. From time to time, we do need to make small inflation adjustments to our fees.

Effective 1<sup>st</sup> August 2009 our new fee structure will be:

30 minutes individual - \$25.50

45 minutes individual - \$38.25

1hour individual - \$51.00

These increases (of 2%) are well below the current inflation rate.

Our other group and shorter length lessons will all increase by just \$0.50 per lesson.

Music in Schools Students will see this new rate take effect from Term 4.

## SCHOOL HOLIDAY LESSONS

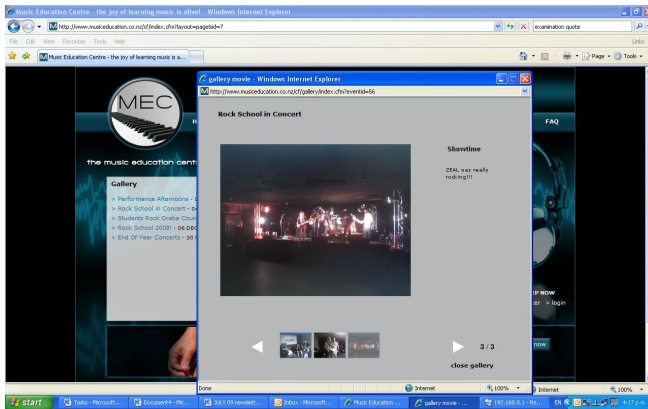
The Music Education Centre is open for lessons are normal in the July School holidays. Lesson continuity makes a real difference in students' success.

If you need to reschedule your lesson time for the holidays, please arrange the time with your teacher now so that suitable arrangements can be made.

**MEC ON THE WEB - Go to:**

**[www.musiceducation.co.nz](http://www.musiceducation.co.nz)**

Sign up to our VIP section online and go into the monthly draw to win a free lesson. While you are there, why not check out our news pages with information and photos about some of the exciting performances and events organized by the Music Education Centre



## **MUSIC EDUCATION CENTRE**

**CALL: 0800 89 39 39**

**[www.musiceducation.co.nz](http://www.musiceducation.co.nz)**

## **WINTER CHILLS AND ILLS**

Please remember that should you be unable to make your lesson due to ill health, please inform your teacher as early as possible. This is a matter of courtesy.

Continuity of tuition is important, however, if you are not well, it is best to take the time to get better as quickly as possible, rather than miss several weeks of lessons through ill health.

Feel free to ask your teacher for their contact numbers or you can leave a message at our centre **0800 89 39 39**.

## **EXAMINATION RESULTS**

### **CONGRATULATIONS TO:**

**Eve Sullivan** (*Jonna Arthur*) –

**Passed Grade 1 Royal Schools Violin**

**Ruyi Cheng** (*Jonna Arthur*) –

**Passed Grade 2 Royal Schools Violin**

**Jaimie Adshead** (*Amanda Morley*) –

**Passed Grade 2 Trinity Piano (merit)**

**Bronte Adshead** (*Amanda Morley*) –

**Passed Grade 2 Trinity Piano**

**Rachel Mc Cluskey** (*Toni Reihana*) –

**Passed Grade 1 Trinity Flute**

## **Exam/Performance**

### **Manuscript/Transcriptions**

available for

### **Solo/Melody Instruments**

and/or

### **Stereo Backing Tracks**

for

**Most Classical & Modern Pieces/Songs**

**Fair Rates Ph Dennis 021 124 0624**

Music Education Centre

Phone – 444 5654

Fax – 444 2806

Email: [lessons@musiceducation.co.nz](mailto:lessons@musiceducation.co.nz)



the music education centre

We are on the Web!

[www.musiceducation.co.nz](http://www.musiceducation.co.nz)